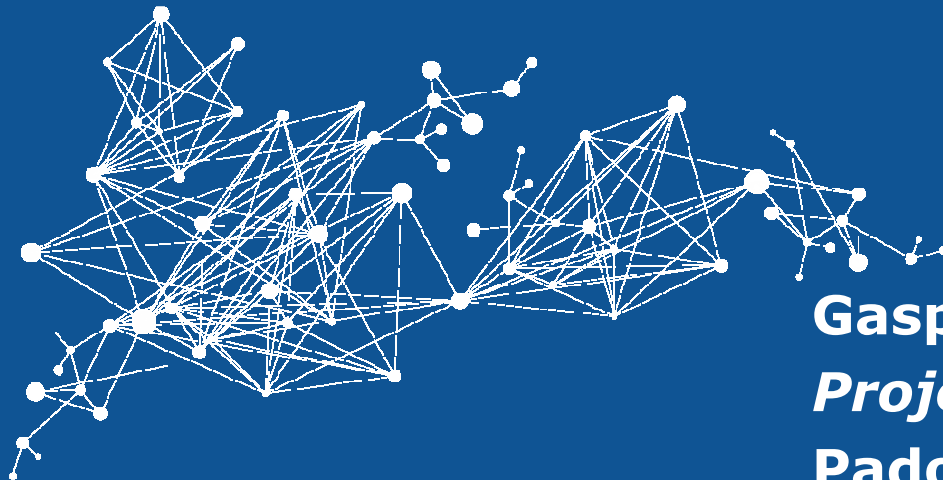




INEA

Innovation and Networks Executive Agency

Making implementation happen



Gaspare L'Episcopia

Project Officer- Unit C.2

Padova, 19 February 2016

1



Innovation and Networks Executive Agency

From 1 January 2014 – **TEN-T EA** (Trans-European Transport Network - Executive Agency) became INEA

Programmes managed by INEA:

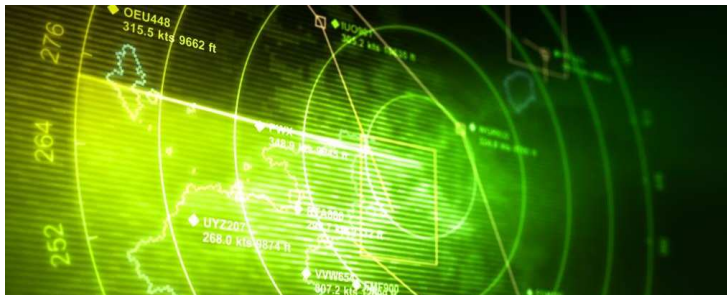
- Legacy Programmes: **Marco Polo and TEN-T Programme**
- 2014-2020 Programmes: **Parts of Horizon 2020 and most of the Connecting Europe Facility**

4 parent DGs – **MOVE, ENER, RTD, CNECT**

We are managed by the Executive Director (Dirk Beckers) and a **Steering Committee** nominated by the Commission



European
Commission



INEA in short

European Commission's
executive agency

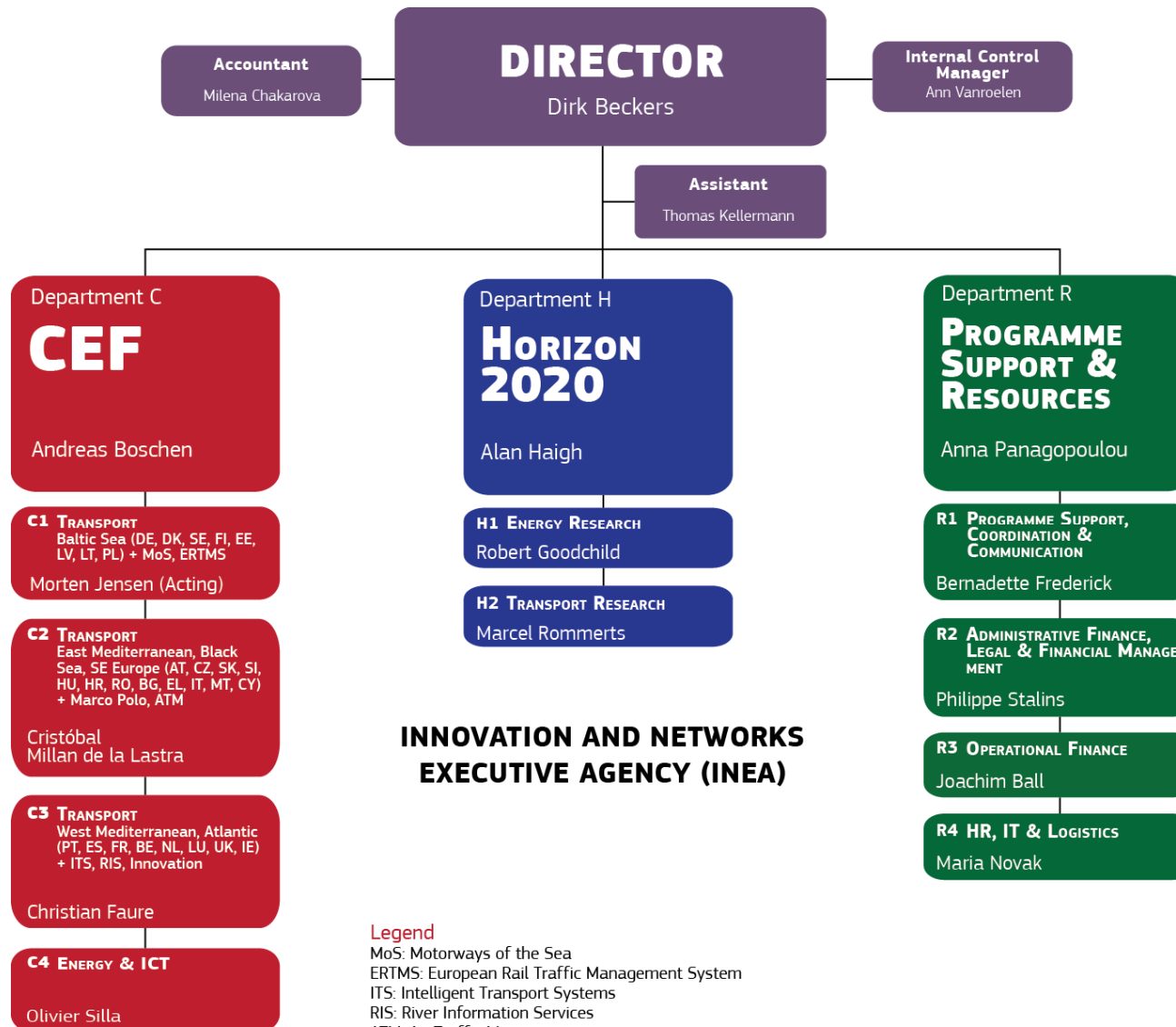
Implementing EU funding
programmes for **transport,
energy and telecoms**

Providing stakeholders with
expertise and high-level
programme management

Promoting synergies
between the programmes



European Commission



Managing programmes worth €34.1B

- CEF Transport (*incl. Cohesion Fund allocation*)
- CEF Energy
- CEF Telecomms



- H2020 Transport
- H2020 Energy

**Marco Polo legacy
from 2007-2013**
*(previously managed by
EACI – now EASME)*



**TEN-T legacy
from 2007-2013**

For the period 2014-2020

Repartition of Tasks

European Commission

DEFINES THE POLICY

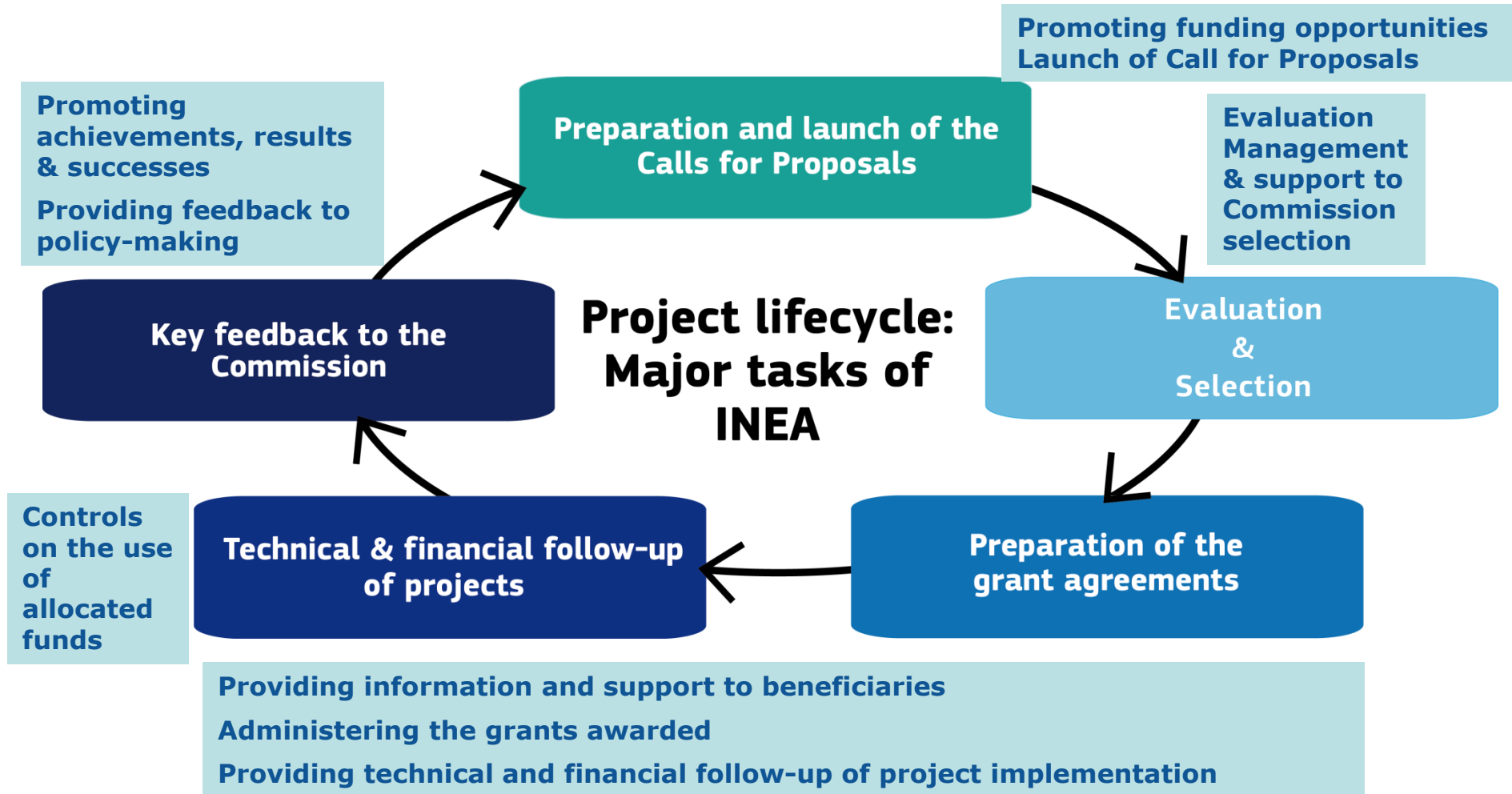
- Makes all CEF programming decisions
- Defines strategy, objectives and priority areas of action
- Selects the projects for co-financing and adopts the financing Decisions
- Monitors the Agency
- Evaluates the programme and the Agency's performance



Executive Agency (INEA)

URNS POLICY INTO ACTION

- Follows up the technical and financial implementation of the CEF projects
- Manages the entire project lifecycle
- Executes the CEF budget
- Gives feedback, assistance and reports to the Commission
- Provides administrative support to the beneficiaries of CEF financing
- Coordinates with other Commission services, programmes, Institutions and financial instruments





The Multiannual Financial Framework 2014-2020: European Council conclusions, 8 February 2013

Key challenge: stabilise the financial and economic system while taking measures to create economic opportunities

1. Smart & inclusive growth (€ 451 billion)



2. Sustainable growth, natural resources (€ 373 billion)

3. Security and citizenship (€ 16 billion)

4. Global Europe (€ 58 billion)

5. Administration (€ 61.6 billion)

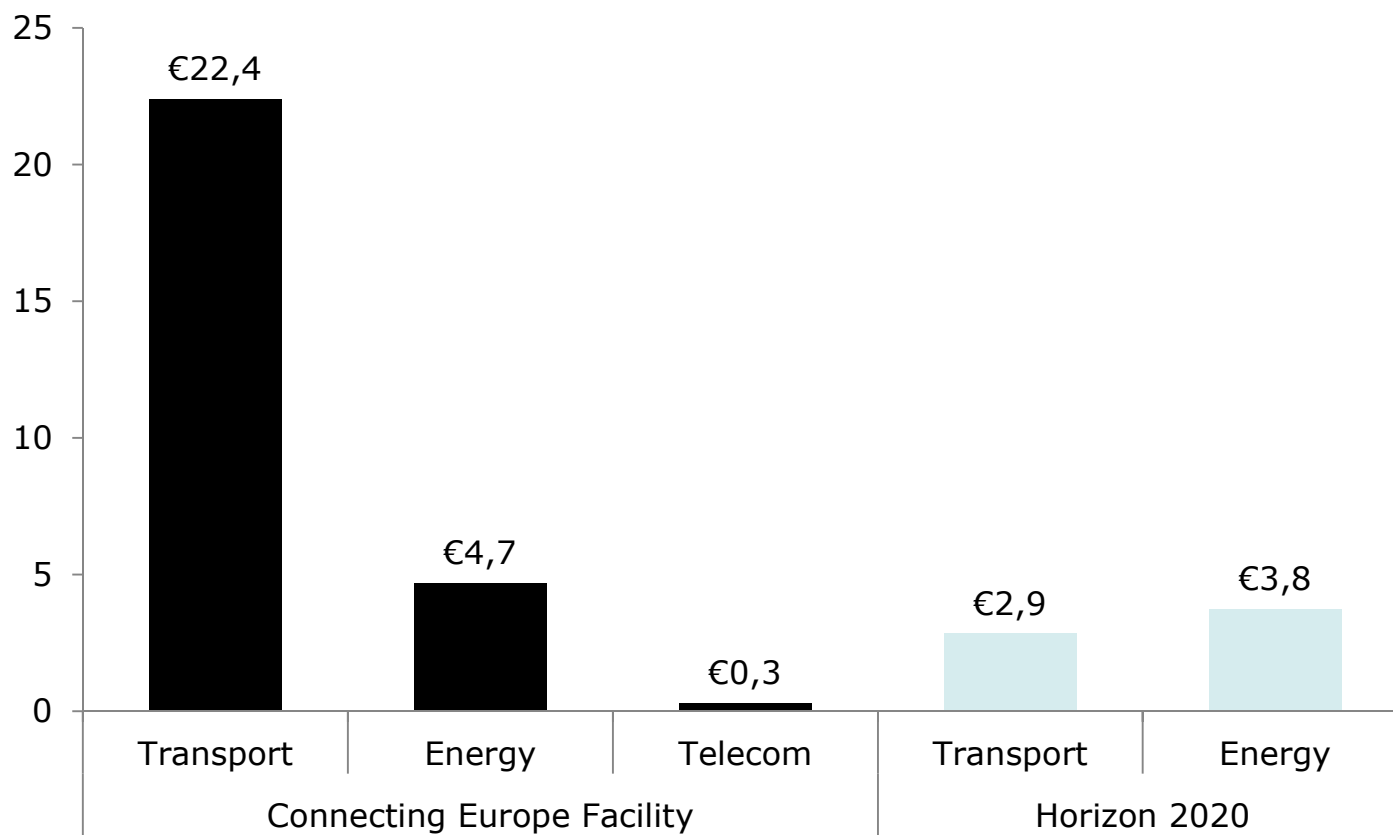
TOTAL
€960 billion



European
Commission

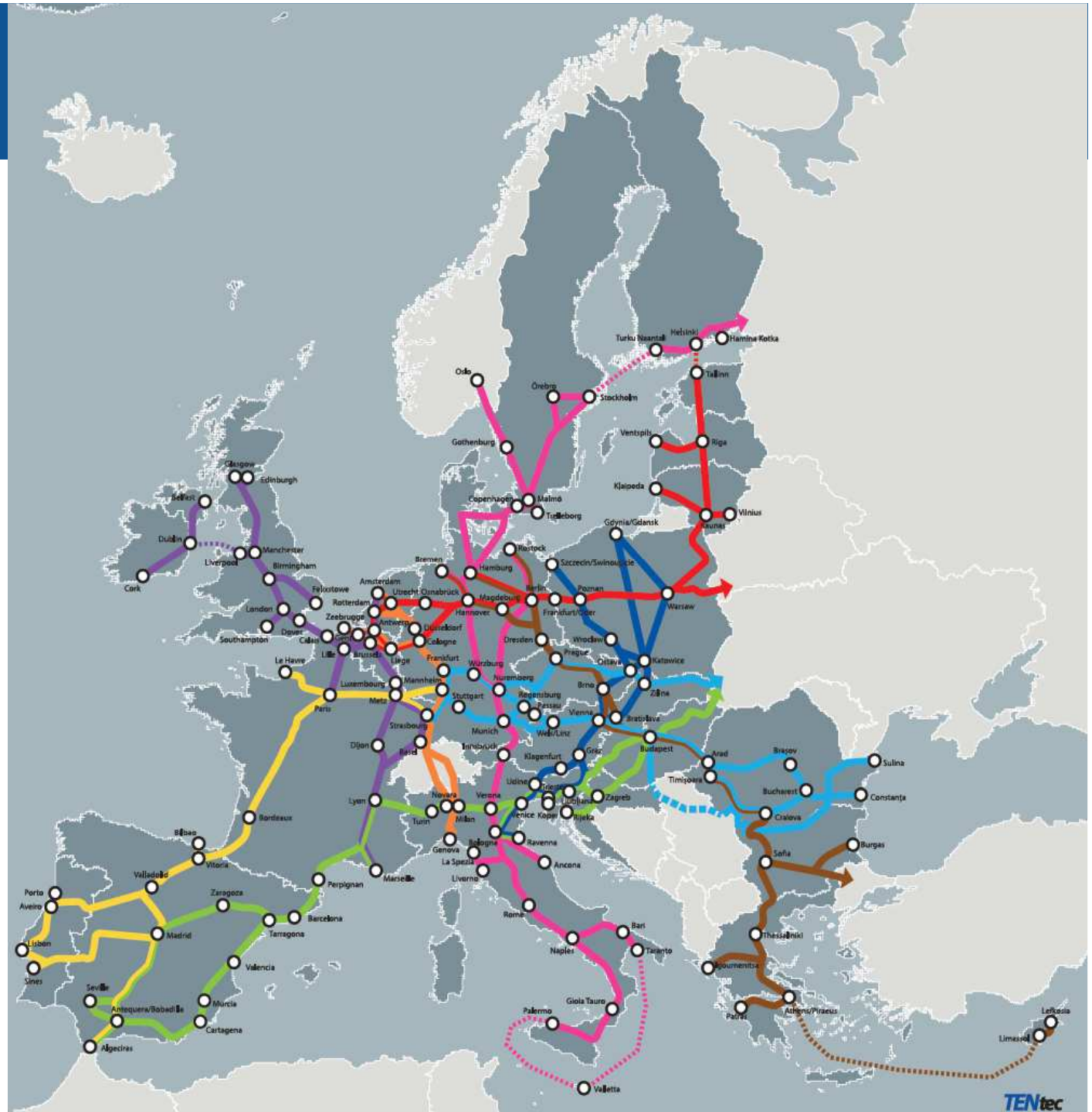
Budget managed by INEA

(Total: €34.1 billion)



Transport:

The 9 core network corridors defined in the CEF

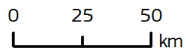
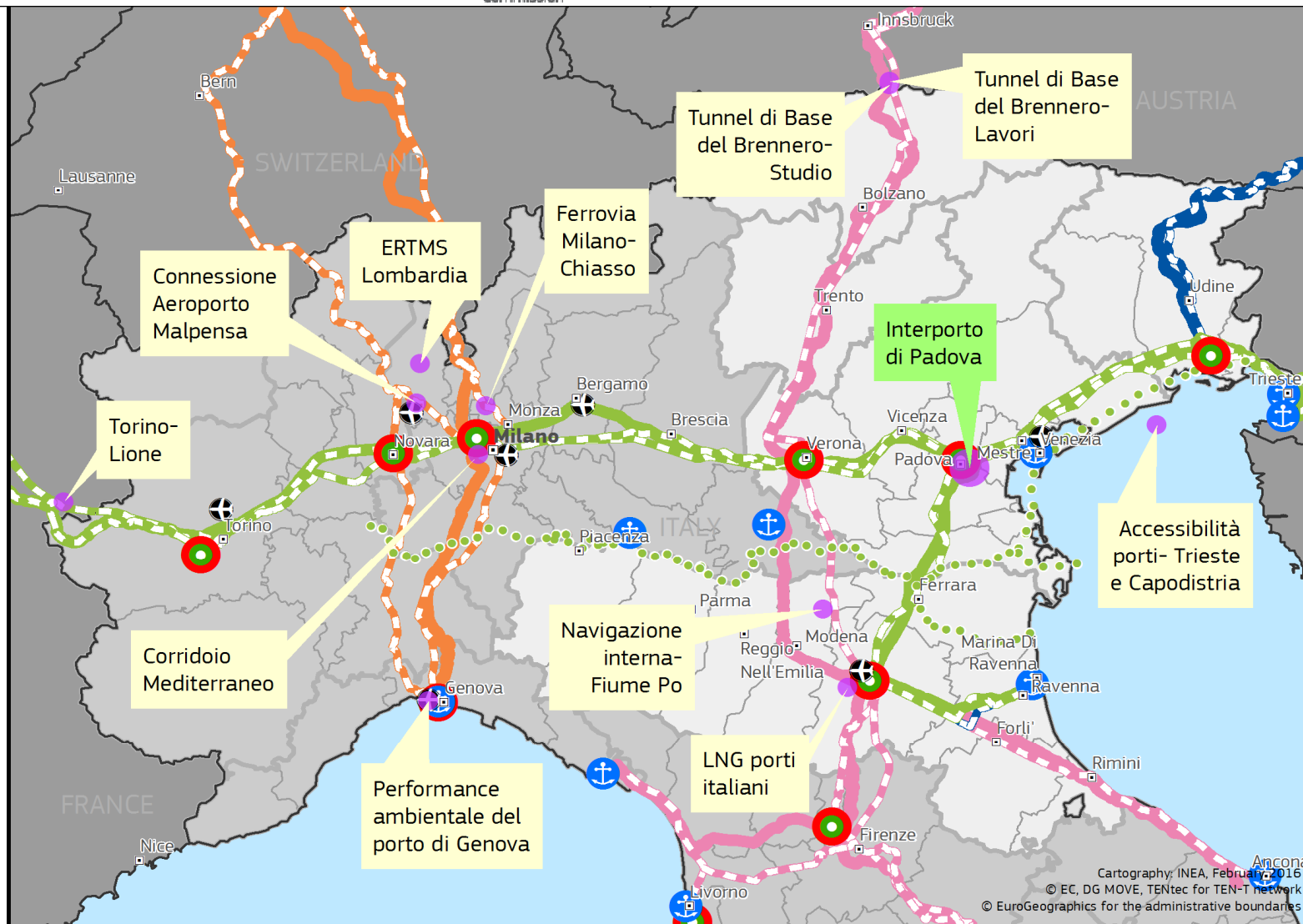




European Commission

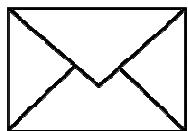
Legend:

- Interporto of Padova
- Projects
- Airports
- Ports
- Rail-RoadTerminals
- A (Baltic - Adriatic)
- iww
- railways
- roads
- C (Mediterranean)
- iww
- railways
- roads
- E (Scan - Med)
- iww
- railways
- roads
- F (Rhine - Alpine)
- iww
- railways
- roads



Cartography: INEA, February 2016
 © EC, DG MOVE, TENtec for TEN-T network
 © EuroGeographics for the administrative boundaries

More information



inea@ec.europa.eu



ec.europa.eu/inea



[@inea_eu](https://twitter.com/inea_eu)



Look for INEA!

Thank you!